



Mammotome® Markers



Compatibility with

Non-Mammotome
breast biopsy devices

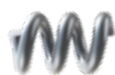
Our Marker Portfolio

Mammotome provides a wide variety of breast biopsy markers available for stereotactic, ultrasound and MRI-guided procedures, compatible with both Mammotome biopsy devices as well as other biopsy devices available on the market today.

HydroMARK™ Markers



Barrel



Open Coil



Butterfly

MammoMARK® Identifiers & CorMARK® Identifiers



Bowtie



U-Shape

MammoSTAR® Markers



Barbell



Tribell

HydroMARK™

Breast Biopsy Site Marker



Marker Materials:
Titanium (nickel free) & Stainless Steel



Marker Carrier:
Hydrogel

Enduring exclusive hydrogel technology provides long-term ultrasound visibility.

- Hydrates to provide enhanced ultrasound visibility for up to 12 months even after neoadjuvant chemotherapy¹
- Easily seen under MRI during a T2 sequence²
- A more visible target for your localization preference³



Hologic ATEC®			Hologic Eviva® / Brevera®			Core Needle, Celero®, FINESSE® ULTRA, VACORA® U/S, BD EleVation™			
PROBE GAUGE	SHAPE	PRODUCT CODE	PROBE GAUGE	SHAPE	PRODUCT CODE	MARKER GAUGE	SHAPE	PRODUCT CODE	
9G T		4010-01-11-T1	9G T		4010-04-09-T1	15G T		4010-02-15-T1	
		4010-01-11-T3			4010-04-09-T3			4010-02-15-T3	
		4010-01-11-T4			4010-04-09-T4			4010-02-15-T4	
	05-10 Delivery = handpiece Aperture = any		4010-05-10-T1	12G T		4010-03-15-T1-SHORT	18G T PC		4010-02-18-T3
			4010-05-10-T3			4010-03-15-T3-SHORT			
			4010-05-10-T4						
01-11 Delivery = outer cannula, detached needle		4010-01-08-T1*	BD EnCor Enspire™						
		4010-01-08-T3*	10G T		4010-03-09-T1				
		4010-01-08-T4*		4010-03-09-T3					
Delivery = introducer sheath Aperture = any *For use with ATEC® MR Probe		4010-01-08-T1*	BD EnCor Enspire™						
		4010-01-08-T3*	MRI T		4010-01-08-T1				
		4010-01-08-T4*			4010-01-08-T3				
				4010-01-08-T4					
			Delivery = through the probe						
			Delivery = through MRI introducer *Also for use with EnCor Enspire™ MR probe						

T = TITANIUM

PC = PETITE CARRIER

HydroMARK™ marker photos courtesy of Dr. Robin Shermis, M.D., ProMedica Breast Care of Toledo

MammoMARK® & CorMARK®

Biopsy Site Identifier

Biopsy Site Identifier



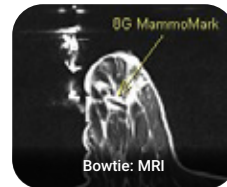
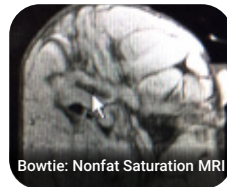
Marker Materials:
Titanium (nickel free)



Marker Carrier:
Medical Grade Bovine Collagen

Precise rapid collagen expansion for unsurpassed placement accuracy.⁴

- Expands rapidly on deployment by 300% reducing chance of migration⁵
- Increased surface area improves ultrasound visibility on deployment⁴
- Quickly absorbs surrounding fluid on deployment⁵



Hologic ATEC®			Hologic Eviva® / Brevera®			Core Needle, Celero®, FINESSE® ULTRA, VACORA® U/S, BD EleVation™		
PROBE GAUGE	SHAPE	PRODUCT CODE	PROBE GAUGE	SHAPE	PRODUCT CODE	MARKER GAUGE	SHAPE	PRODUCT CODE
9G		MMK1001	9G		MAM3001	14G		MAM3014
		MMK1002			MAM3002			
Delivery = back of probe Aperture = 20mm					MAM3008			
9G		MAM3001*	MAM3001/3002 Aperture = 20mm MAM3008 Aperture = 12mm Needle length = 13cm					
		MAM3002*	12G		MAM3001			
Delivery = introducer sheath Aperture = 20mm *Also compatible with ATEC® MR Probe					MAM3002			
			BD EnCor Enspire™					
PROBE GAUGE	SHAPE	PRODUCT CODE	PROBE GAUGE	SHAPE	PRODUCT CODE	MARKER GAUGE	SHAPE	PRODUCT CODE
7G		MRM4008	7G		MRM4008			
10G		MRM4002	10G		MRM4002			

MammoSTAR®

Biopsy Site Marker



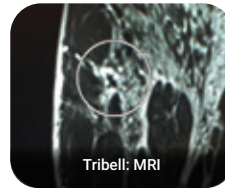
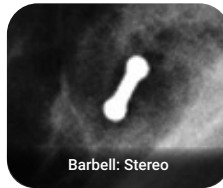
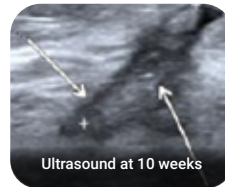
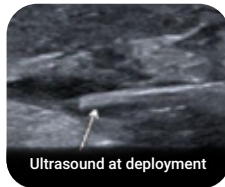
Marker Materials:
Carbon Coated Ceramic (nickel free)



Marker Carrier (Regular & Petite):
Beta Glucan (polysaccharide simple sugar)

Natural non-metal marking
alternative for unique
patient sensitivities.

- A non-metal option not derived from animal
- Enables ability to localize under ultrasound
- Long-term ultrasound visibility⁶



Hologic ATEC®			Hologic Eviva® / Brevera®			Core Needle, Celero®, FINESSE® ULTRA, VACORA® U/S, BD EleVation™					
PROBE GAUGE	SHAPE	PRODUCT CODE	PROBE GAUGE	SHAPE	PRODUCT CODE	MARKER GAUGE	SHAPE	PRODUCT CODE			
9G		STAR1031	9G		STAR1121	10G		STAR1001			
		STAR1032									
		STAR1033									
Delivery = back of probe STAR1031/1032 Aperture = 20mm STAR1033 Aperture = 12mm or 20mm			Aperture = 20mm Needle length = 13cm			14G		STAR1401			
9G		STAR1101	BD EnCor Enspire™							STAR1402	
		STAR1102									
Delivery = detached needle Aperture = 20mm			Delivery = detached needle Aperture = 20mm			PC		STAR1403			
7G		STAR0831	7G		STAR0831				10G		STAR1031
		STAR0832									
		STAR0833									
10G		STAR1031	10G		STAR1031	PC		STAR1032			
		STAR1032									
		STAR1033									

Order Placement



Contact your Customer Service Representative at **+49 (0) 4106 978 9300**. Shipping details and an order confirmation number will be provided to you upon completion of your order.



Send your order via fax to your Customer Service Representative at **+49 (0) 40-500 98 940**.



Send your order via email to your Customer Service Representative at **info-europe@mammotome.com**.

Devicor Medical Europe GmbH

Carl-Zeiss-Straße 9 | 25451 Quickborn (Germany)

Phone: +49 (0) 4106 978 9300 | **Customer Service:** 0800 500 98 98

Email: info-europe@mammotome.com

Commercial Register: 15448 KI | District court: Kiel | Tax number: 18/297/28192 | VAT-ID: DE202370516

Mammotome

mammotome.com

References:

1. Sakamoto N, Fukuma E, Tsunoda Y, Teraoka K, Koshida Y. Evaluation of the dislocation and long-term sonographic detectability of a hydrogel-based breast biopsy site marker. *Breast Cancer*. 2018 Sep;25(5):575-582. doi: 10.1007/s12282-018-0854-8. Epub 2018 Mar 23. PMID: 29572658.
2. Shah AD, Mehta AK, Talati N, Brem R, Margolies LR. Reprint of: Breast tissue markers: Why? What's out there? How do I choose? *Clin Imaging*. 2019 May-Jun;55:196-212. doi: 10.1016/j.clinimag.2019.05.014. Epub 2019 Jun 14. PMID: 31204189.
3. Blumencranz, P.W., Ellis, D. & Barlowe, K. Use of Hydrogel Breast Biopsy Tissue Markers Reduces the Need for Wire Localization. *Ann Surg Oncol* 21, 3273–3277 (2014). <https://doi.org/10.1245/s10434-014-3917-x>
4. Corsi F, Sorrentino L, Sartani A, Bossi D, Amadori R, Nebuloni M, Truffi M, Bonzini M, Foschi D. Localization of nonpalpable breast lesions with sonographically visible clip: optimizing tailored resection and clear margins. *Am J Surg*. 2015 Jun;209(6):950-8. doi: 10.1016/j.amjsurg.2014.07.010. Epub 2014 Oct 12. PMID: 25457243.
5. MammoMARK™ Device Test - PRC043442 Rev B, pgs. 2, 5-6: Collagen Expansion
6. Mammotome data on file

Product may not be approved or available in your region. Please check with your local Mammotome representative.

© 2023 Devicor Medical Products, Inc. All rights reserved. Devicor, Mammotome, HydroMARK, MammoMARK, CorMARK and MammoSTAR are registered trademarks of Devicor Medical Products, Inc., in the USA and optionally in other countries. Other logos, product and/or company names might be trademarks of their respective owners. MDM# 220555 Rev 5/23